

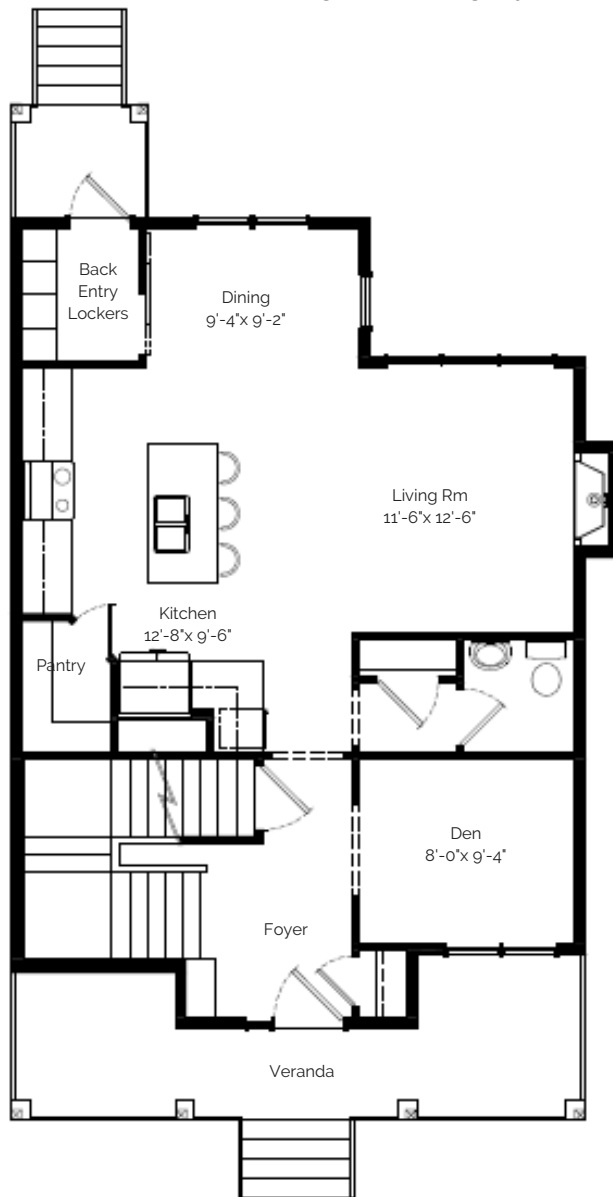


## THE OPAL 2 STOREY

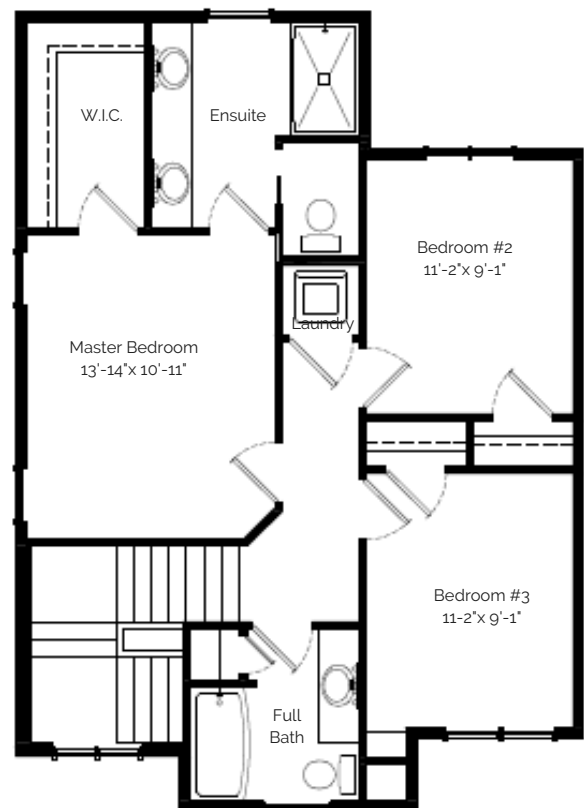
1568 SQ FT | 3 BDRM | 2.5 BATHS

\*Image is a rendering only, actual square footage, features, and details may vary.

**Main Floor**  
784 Sq Ft



**Upper Floor**  
784Sq Ft



EXPERIENCE MORE™  
MORE VALUE | MORE INNOVATION | MORE IN EVERY HOME



PHONE 403-394-7554  
EMAIL [sales@cedarridgehomes.ca](mailto:sales@cedarridgehomes.ca)  
WEBSITE [www.cedarridgehomes.ca](http://www.cedarridgehomes.ca)